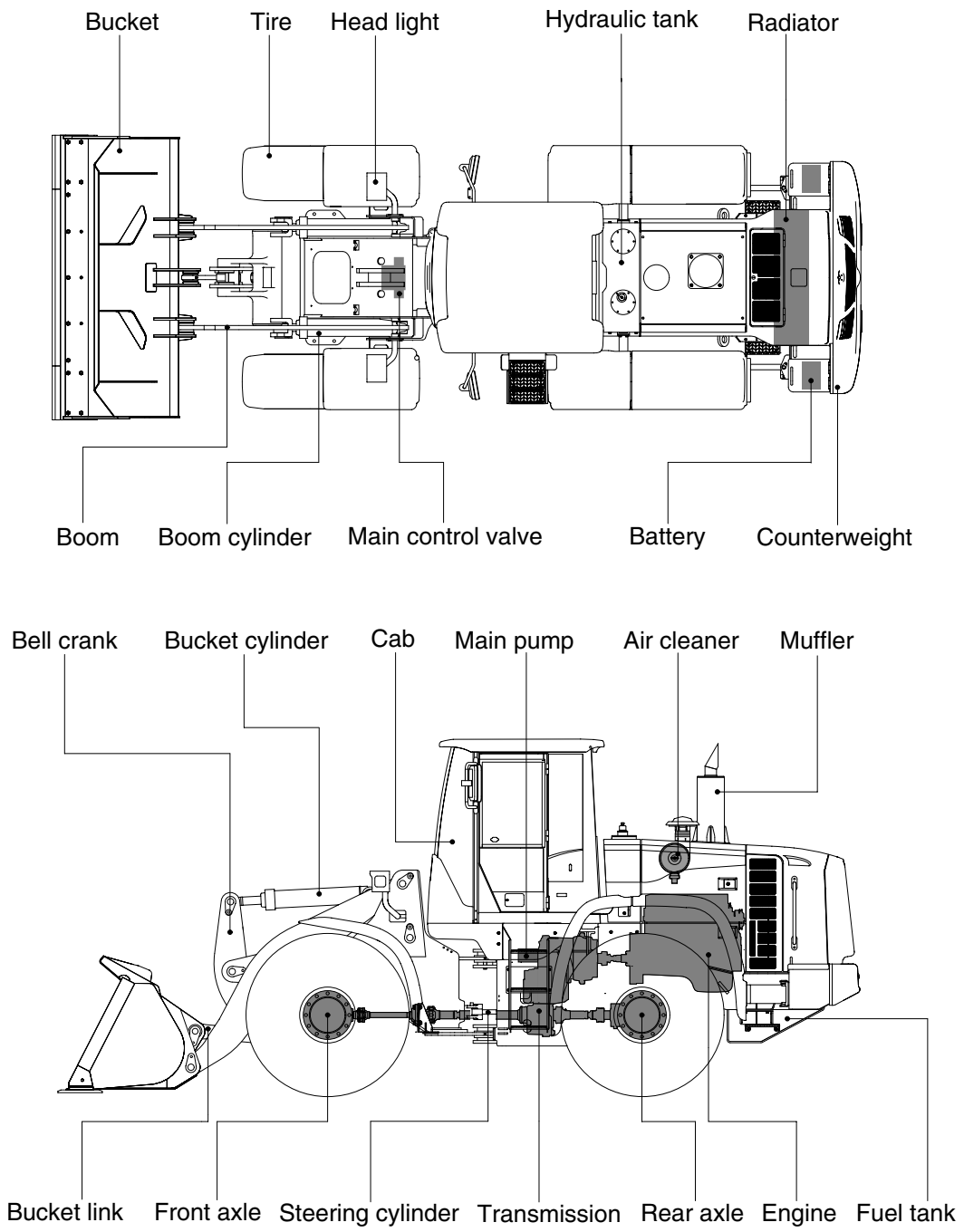


2. SPECIFICATIONS

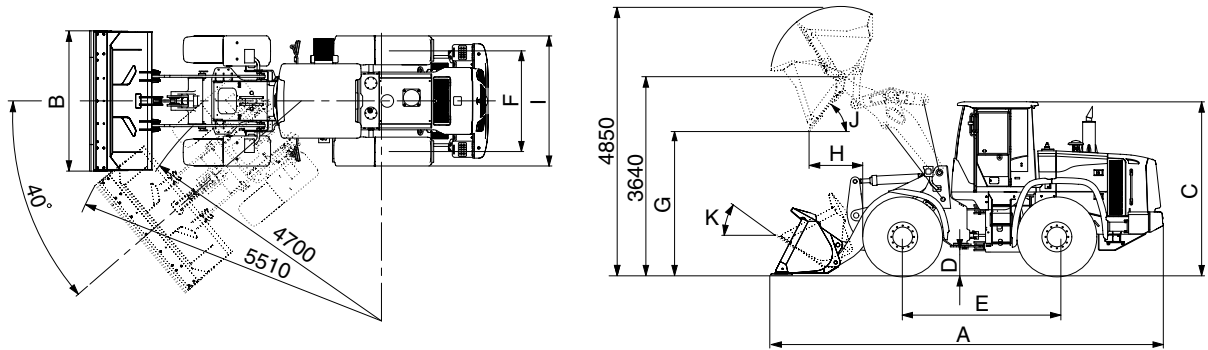
1. MAJOR COMPONENTS



73092SP05

2. SPECIFICATIONS

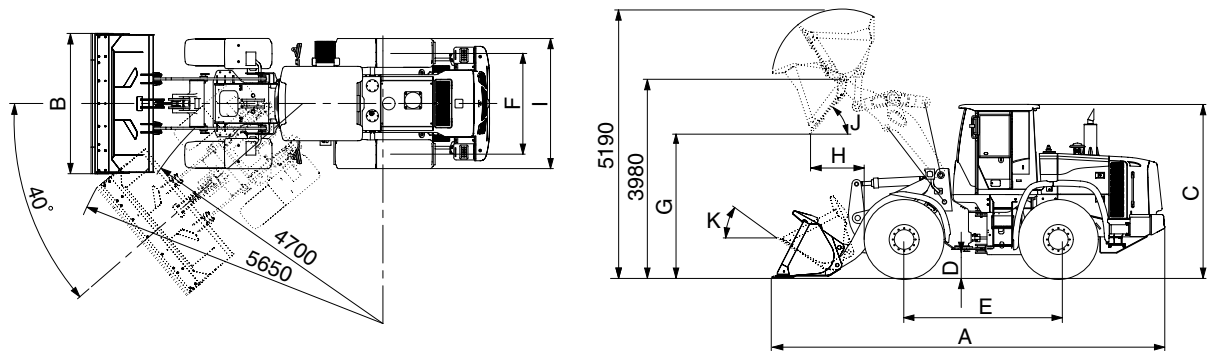
1) WITH BOLT-ON CUTTING EDGE TYPE BUCKET (HL730-9)



73092SP01

Description		Unit	Specification	
Operating weight		kg (lb)	9800 (21600)	
Bucket capacity	Struck	m ³ (yd ³)	1.6 (2.1)	
	Heaped		1.9 (2.5)	
Overall length	A	mm (ft-in)	6950 (22' 10")	
Overall width	B		2450 (8' 0")	
Overall height	C		3170 (10' 5")	
Ground clearance	D		370 (1' 3")	
Wheelbase	E		2750 (9' 0")	
Tread	F		1850 (6' 0")	
Dump clearance at 45°	G		2700 (8' 10")	
Dump reach (full lift)	H		1040 (3' 5")	
Width over tires	I		2295 (7' 6")	
Dump angle	J		degree (°)	48
Roll back angle (carry position)	K			47
Cycle time	Lift (with load)	sec	5.4	
	Dump (with load)		1.0	
	Lower (empty)		2.8	
Maximum travel speed		km/hr (mph)	37.2 (23.2)	
Braking distance		m (ft-in)	12 (39' 4")	
Minimum turning radius (center of outside tire)			4.7 (15' 5")	
Gradeability		degree (°)	30	
Travel speed	Forward	First gear	6.1 (3.8)	
		Second gear	11.2 (7.0)	
		Third gear	22.2 (13.8)	
		Fourth gear	37.2 (23.2)	
	Reverse	First gear	6.4 (4.0)	
		Second gear	11.8 (7.4)	
Third gear		23.4 (14.6)		

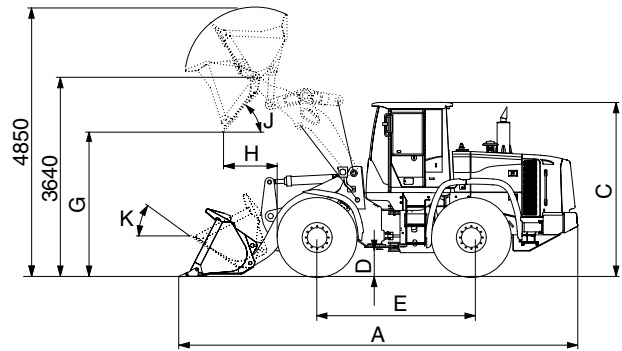
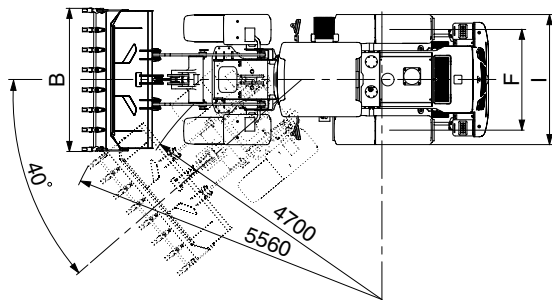
WITH BOLT-ON CUTTING EDGE TYPE BUCKET (HL730XTD-9)



73092SP02

Description		Unit	Specification	
Operating weight		kg (lb)	10000 (22050)	
Bucket capacity	Struck	m ³ (yd ³)	1.6 (2.1)	
	Heaped		1.9 (2.5)	
Overall length	A	mm (ft-in)	7240 (23' 9")	
Overall width	B		2450 (8' 0")	
Overall height	C		3170 (10' 5")	
Ground clearance	D		370 (1' 3")	
Wheelbase	E		2750 (9' 0")	
Tread	F		1850 (6' 0")	
Dump clearance at 45°	G		3035 (9' 11")	
Dump reach (full lift)	H		1010 (3' 4")	
Width over tires	I		2295 (7' 6")	
Dump angle	J		degree (°)	48
Roll back angle (carry position)	K			49
Cycle time	Lift (with load)	sec	5.4	
	Dump (with load)		1.0	
	Lower (empty)		2.8	
Maximum travel speed		km/hr (mph)	37.2 (23.2)	
Braking distance		m (ft-in)	12 (39' 4")	
Minimum turning radius (center of outside tire)			4.7 (15' 5")	
Gradeability		degree (°)	30	
Travel speed	Forward	First gear	6.1 (3.8)	
		Second gear	11.2 (7.0)	
		Third gear	22.2 (13.8)	
		Fourth gear	37.2 (23.2)	
	Reverse	First gear	6.4 (4.0)	
		Second gear	11.8 (7.4)	
Third gear		23.4 (14.6)		

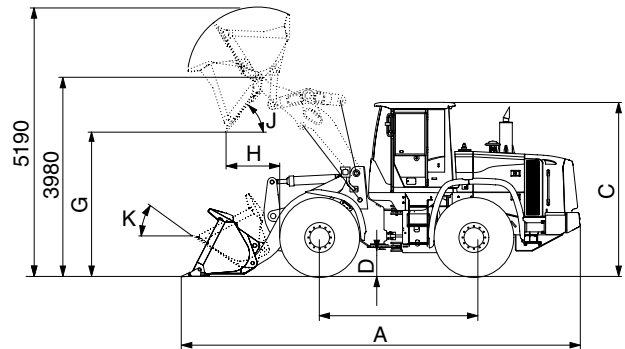
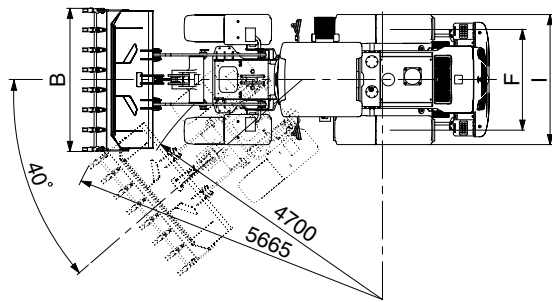
2) WITH TOOTH TYPE BUCKET (HL730-9)



73092SP03

Description		Unit	Specification	
Operating weight		kg (lb)	9800 (21600)	
Bucket capacity	Struck	m ³ (yd ³)	1.5 (2.0)	
	Heaped		1.8 (2.4)	
Overall length	A	mm (ft-in)	7060 (23' 2")	
Overall width	B		2480 (8' 2")	
Overall height	C		3170 (10' 5")	
Ground clearance	D		370 (1' 3")	
Wheelbase	E		2750 (9' 0")	
Tread	F		1850 (6' 0")	
Dump clearance at 45°	G		2610 (8' 7")	
Dump reach (full lift)	H		1100 (3' 8")	
Width over tires	I		2295 (7' 6")	
Dump angle	J		degree (°)	48
Roll back angle (carry position)	K			47
Cycle time	Lift (with load)	sec	5.4	
	Dump (with load)		1.0	
	Lower (empty)		2.8	
Maximum travel speed		km/hr (mph)	37.2 (23.2)	
Braking distance		m (ft-in)	12 (39' 4")	
Minimum turning radius (center of outside tire)			4.7 (15' 5")	
Gradeability		degree (°)	30	
Travel speed	Forward	First gear	6.1 (3.8)	
		Second gear	11.2 (7.0)	
		Third gear	22.2 (13.8)	
		Fourth gear	37.2 (23.2)	
	Reverse	First gear	6.4 (4.0)	
		Second gear	11.8 (7.4)	
Third gear		23.4 (14.6)		

WITH TOOTH TYPE BUCKET (HL730XTD-9)



73092SP04

Description		Unit	Specification	
Operating weight		kg (lb)	10000 (22050)	
Bucket capacity	Struck	m ³ (yd ³)	1.5 (2.0)	
	Heaped		1.8 (2.4)	
Overall length	A	mm (ft-in)	7350 (24' 1")	
Overall width	B		2480 (8' 2")	
Overall height	C		3170 (10' 5")	
Ground clearance	D		370 (1' 3")	
Wheelbase	E		2750 (9' 0")	
Tread	F		1850 (6' 0")	
Dump clearance at 45°	G		2950 (9' 8")	
Dump reach (full lift)	H		1080 (3' 7")	
Width over tires	I		2295 (7' 6")	
Dump angle	J		degree (°)	47
Roll back angle (carry position)	K			49
Cycle time	Lift (with load)	sec	5.4	
	Dump (with load)		1.0	
	Lower (empty)		2.8	
Maximum travel speed		km/hr (mph)	37.2 (23.2)	
Braking distance		m (ft-in)	12 (39' 4")	
Minimum turning radius (center of outside tire)			4.7 (15' 5")	
Gradeability		degree (°)	30	
Travel speed	Forward	First gear	6.1 (3.8)	
		Second gear	11.2 (7.0)	
		Third gear	22.2 (13.8)	
		Fourth gear	37.2 (23.2)	
	Reverse	First gear	6.4 (4.0)	
		Second gear	11.8 (7.4)	
Third gear		23.4 (14.6)		

3. WEIGHT

Item		kg	lb
Front frame assembly		798	1760
Rear frame assembly		1068	2360
Front fender (LH & RH)		31	68
Counterweight	HL730-9	300	660
	HL730XTD-9	410	900
Cab assembly		700	1540
Engine assembly		371	818
Transmission assembly		380	840
Drive shaft (front)		17	37
Drive shaft (center)		17	37
Drive shaft (rear)		9	20
Drive shaft (upper)		7	15
Front axle (include differential)		953	2100
Rear axle (include differential)		953	2100
Tire (17.5-25, 12PR, L3)		130	290
Hydraulic tank assembly		147	324
Fuel tank assembly		282	622
Main pump assembly		26	57
Fan & brake pump assembly		7	15
Main control valve (2/3 spool)		34/41	75/90
Boom assembly	HL730-9	558	1230
	HL730XTD-9	626	1380
Bell crank assembly		135	298
Bucket link		29	64
1.9 m ³ bucket, with bolt on cutting edge		810	1790
1.8 m ³ bucket, with tooth		730	1610
Boom cylinder assembly		70	150
Bucket cylinder assembly		78	170
Steering cylinder assembly		15	30
Seat		40	88
Battery		28	62

4. SPECIFICATION FOR MAJOR COMPONENTS

1) ENGINE

Item	Specification
Model	Cummins QSB4.5
Type	4-cycle turbocharged and charge air-cooled diesel engine.
Cooling method	Water cooling
Number of cylinders and arrangement	4 cylinders, in-line
Firing order	1-3-2-4
Combustion chamber type	Direct injection type
Cylinder bore × stroke	107 × 124 mm (4.2" × 4.9")
Piston displacement	4500 cc (275 cu in)
Compression ratio	17.2 : 1
Rated gross horse power	125 hp at 2100 rpm
Maximum gross torque at 1400rpm	56 kgf · m (408 lbf · ft)
Engine oil quantity	11 l (2.9 U.S. gal)
Dry weight	371 kg (818 lb)
High idling speed	2230 ± 50rpm
Low idling speed	950 ± 25 rpm
Rated fuel consumption (at rated)	237 g/kw · hr
Starting motor	Nippondenso 228000-7902 (24 V-3.7 kW)
Alternator	Delco Remy 24SI (24V-70Amp)
Battery	2 × 12V × 100Ah

2) MAIN PUMP

Item	Specification
Type	Variable displacement piston pump
Capacity	36+32.3 cc/rev
Maximum operating pressure	250 kgf/cm ² (3560 psi)
Rated operating speed	2100 rpm
Rated output flow	126 l /min (33.3 U.S.gpm)

3) FAN AND BRAKE PUMP

Item	Specification	
	Fan	Brake
Type	Fixed displacement tandem gear pump	
Capacity	9.17 cc/rev	9.17 cc/rev
Maximum operating pressure	120 kgf/cm ² (1710 psi)	150 kgf/cm ² (2130 psi)
Rated operating speed	2100 rpm	
Rated output flow	19 l /min (5.0 U.S.gpm)	19 l /min (5.0 U.S.gpm)

4) MAIN CONTROL VALVE

Item	Specification
Type	2 spool
Operating method	Hydraulic pilot assist
Main relief valve set pressure	250 kgf/cm ² (3560 psi)
Overload relief valve set pressure	300 kgf/cm ² (4270 psi)

5) REMOTE CONTROL VALVE

Item	Specification	
Type	Joystick (or with aux lever)	
Control pressure	Minimum	3.7 kgf/cm ² (52.6 psi)
	Maximum	30 kgf/cm ² (427 psi)

6) CYLINDER

Item	Specification
Boom cylinder	Bore dia × Rod dia × Stroke ø 100 × ø 65 × 750 mm
Bucket cylinder	Bore dia × Rod dia × Stroke ø 110 × ø 65 × 510 mm
Steering cylinder	Bore dia × Rod dia × Stroke ø 60 × ø 35 × 412 mm

7) DYNAMIC POWER TRANSMISSION DEVICES

Item		Specification
Torque converter	Model	ZF 4WG130
	Type	Single-stage, single-phase
	Ratio	1.87 : 1
Transmission	Type	Full-automatic power shift
	Gear shift	Forward fourth gear, reverse third gear
	Control	Electrical single lever type, kick-down system
	Pump rated flow	85 ℓ /min (22.5 U.S.gpm) at 2000 rpm
Axle	Drive devices	4-wheel drive
	Front	Front fixed location
	Rear	Oscillation $\pm 10^\circ$ of center pin-loaded
Wheels	Tires	17.5-25, 12PR (L3)
Brakes	Travel	Four-wheel, wet-disc type, full hydraulic
	Parking	Spring applied, hydraulic released brake on front axle
Steering	Type	Full hydraulic, articulated
	Steering angle	40° to both right and left angle, respectively